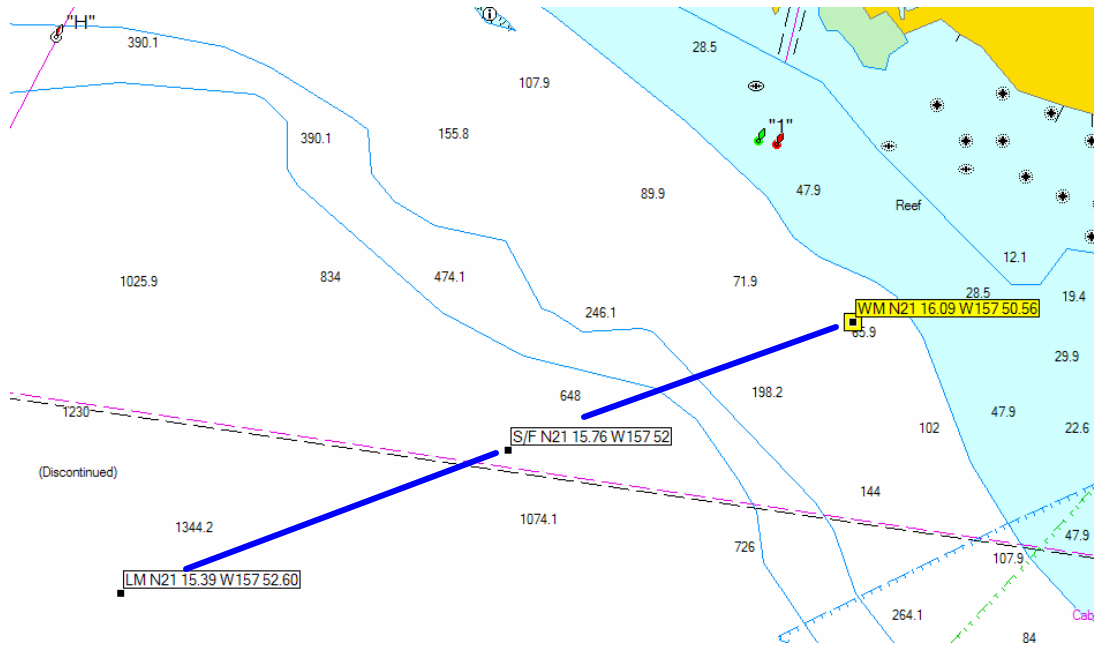


**Appendix D**  
**WINDWARD-LEEWARD RACES**  
**2006 - WAIKIKI OFFSHORE REGATTA**

**1. THE RACING AREA**

*The racing area will be south of the Ala Wai Harbor entrance. The Start finish line will be approximately 1 nm at 210 degrees from the Ala Wai entrance buoys at approximately N21° 15.76' W157° 52'. The weather mark will be located approximately 1 nm at 60 degrees from the start finish line at approximately N21° 16.9' W157° 50.56'. The leeward mark will be located approximately two nautical miles at 240 degrees from the windward mark at approximately N21° 15.39' W157° 52.60'.*



**2. SCHEDULE OF RACES**

**FIRST RACE OF THE DAY**

<u>DIVISION</u>	<u>WARNING FLAG</u>	<u>WARNING SIGNAL</u>	<u>START</u>
1 & 2	YELLOW	1055	1100

**SECOND RACE OF THE DAY:**

The Second Race Warning Signal for Class A will be 5 minutes following the last boat to finish in the preceding race. The race committee may broadcast a warning message over VHF 71 one minute prior to the warning signal. The starting sequence for the Second Race will be the same as the starting sequence for the First Race.

**3. MARKS**

- 3.1. All rounding marks will be inflatable tetrahedrons.
- 3.2. Mark Boats: Mark Boats may be positioned adjacent to Marks “1”, “3” after the Start. Each Mark Boat will display an orange flag bearing a number corresponding to the adjacent mark.


**Appendix D, page two**

**4. THE START**

- 4.1. Starboard End of Starting Line: inflatable tetrahedron.
- 4.2. Port End of the Starting Line: inflatable tetrahedron.
- 4.3. MCB (Main Committee Boat) and ACB (Assistance Committee Boat) will be identified by white flags with the word "LINE".

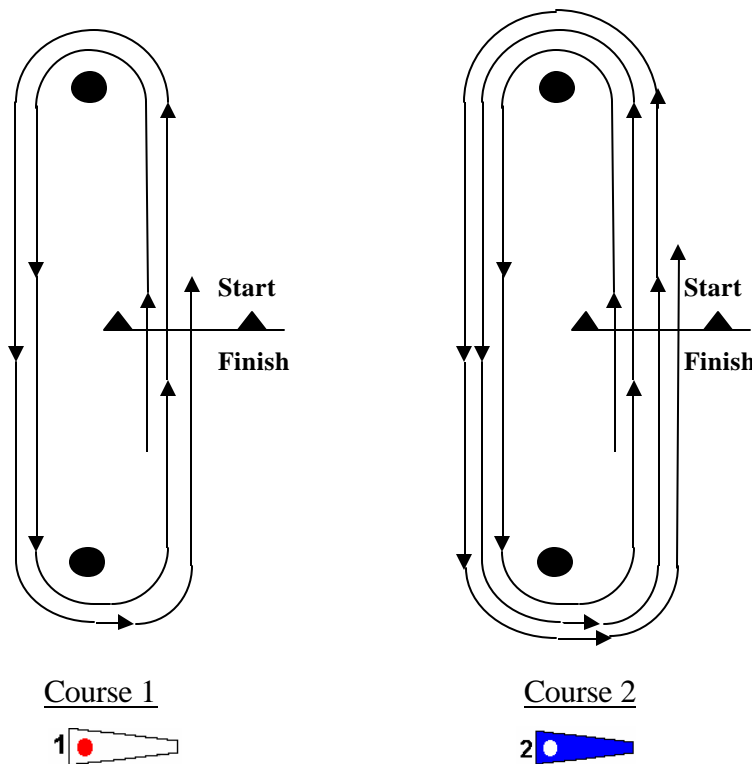
**5. THE COURSE**

5.1. The Course will designated:

Course 1 (one), Numeral pennant 1 

Course 2 (two) numeral pennant 2. 

- 5.2. Course 1: "Start – 1 – 3 – 1 – 3 – Finish" All marks will be rounded to port.
- 5.3. Course 2: "Start – 1 – 3 – 1 – 3 – 1 – 3 – Finish ". All marks will be rounded to port.



**6. CHANGE OF THE COURSE AFTER THE START**

- 6.1. Shortened Course. The course may be shortened before the leading boat rounds Mark "1" or "3" on any round of the course. Code Flag "S" will be displayed from the Mark Boat stationed adjacent to Mark "1" or "3" and the Mark Boat will make sound signals at short intervals to call attention to the code flag displayed. Boats shall proceed to the start/finish line and finish in the direction from the last mark, modifying Race Signal "S".
- 6.2. Relocation of Windward Mark. Should there be a substantial wind shift after the Start, Mark
- 6.3. "1" may be replaced by an inflatable tetrahedron in a location more directly to windward of Mark "3" at a distance of approximately 2.5 nautical miles. The course change will be signaled from the Mark Boat stationed to Leeward of Mark "3". The Mark Boat will display Code Flag "C", make sound signals at short intervals to call attention to the code flag displayed and display the new course axis in degrees magnetic.

**Appendix D, page three**

**6.4.** Mark Missing: If a mark of the course should drift from its original position, the Mark Boat will assume the position of the Mark and display Code Flag “M”. The Mark Boat will make sound signals at short intervals to call attention to the Code Flag “M” being displayed.

**7. THE FINISH**

**7.1.** The Finish Line will be the Start Line for that race, between two inflatable tetrahedrons.

**7.2.** Finishing Stations for the Committee Boats: Committee Boats may be stationed on both the port and starboard extensions of the Finish Line. The Race Committee may protest any competing boat causing a Committee Boat to move from her station on an extension of the finish line.

**7.3.** Finishing Signals: ONE HORN will be sounded for all boats finishing.